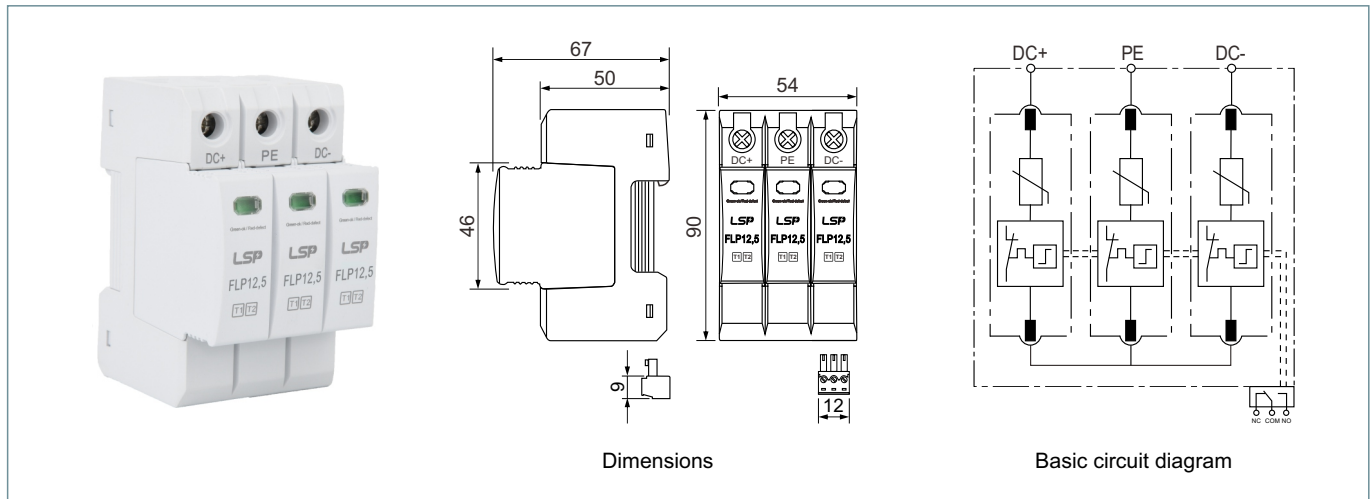


FLP12,5-PV1200/3
FLP12,5-PV1200/3S

Pluggable modular multi-pole PV SPD type 1 and type 2 lightning current surge arrester for use in photovoltaic systems

- With remote signalling contact for monitoring device (floating changeover contact) (S)
- For installation in the DC circuits of solar photovoltaic systems, string box, inverter
- Mode of Protection: (DC+) - PE, (DC-) - PE, (DC+) - (DC-)
- Surge Ratings: $I_{total} = \text{up to } 50 \text{ kA (10/350}\mu\text{s)}$, $I_{total} = \text{up to } 50 \text{ kA (8/20}\mu\text{s)}$
- EU Category: Type 1+2
- Protective Elements: High Energy MOV



Type	FLP12,5-PV1200/3	FLP12,5-PV1200/3S
SPD according to EN 50539-11:2013	type 1 + type 2	type 1 + type 2
Maximum operating voltage U_{CPV}	$\leq 1200 \text{ V}$	$\leq 1200 \text{ V}$
Short-circuit current rating I_{SCPV}	200 A	200 A
Lightning impulse current (10/350 μs) [(DC+/DC-)-> PE] I_{total}	50 kA	50 kA
Total discharge current (8/20 μs) [(DC+/DC-)-> PE] I_{total}	50 kA	50 kA
Lightning impulse current (10/350 μs) I_{imp}	12,5 kA	12,5 kA
Nominal discharge current (8/20 μs) I_n	20 kA	20 kA
Maximum discharge current (8/20 μs) I_{max}	50 kA	50 kA
Voltage protection level U_p	4,4 kV	4,4 kV
Response time t_A	25 ns	25 ns
Range of operating temperatures T_U	-40/+80°C	-40/+80°C
Operating state / fault indication	green / red	green / red
Number of ports	1	1
Cross-sectional area (min.)	1.5 mm ² solid /flexible	1.5 mm ² solid /flexible
Cross-sectional area (max.)	35 mm ² stranded / 25 mm ² flexible	35 mm ² stranded / 25 mm ² flexible
For mounting on	35 mm DIN rail acc. to EN 60715	35 mm DIN rail acc. to EN 60715
Enclosure material	thermoplastic	thermoplastic
Place of installation	indoor installation	indoor installation
Degree of protection	IP 20	IP 20
Capacity	3 module(s), DIN 43880	3 module(s), DIN 43880
Approvals	CE	CE
Type of remote signalling contact	-	changeover contact
a.c. switching capacity	-	250V / 0.5 A
d.c. switching capacity	-	250V / 0.1 A; 125 V / 0.2 A; 75 V / 0.5 A
Cross-sectional area for remote signalling terminals	-	max. 1.5 mm ² solid / flexible